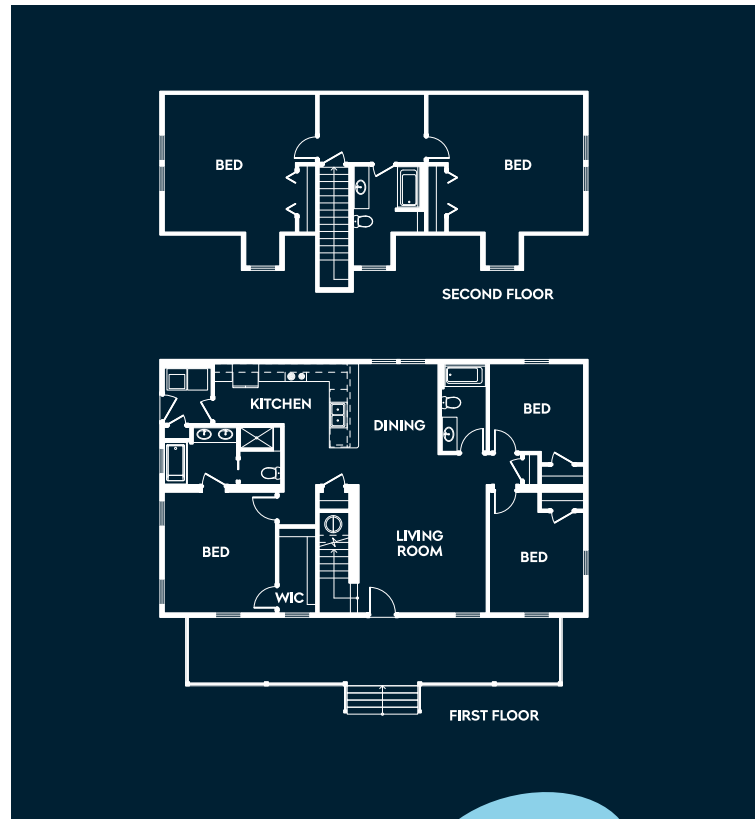




# AFFINITY



## ST. MARY'S

*Timeless Southern living designed to grow with you*

Inspired by classic Cape-style architecture, St. Mary's offers a timeless design with the flexibility to adapt over time. A covered front porch adds to its Southern character and can be extended or wrapped to suit the homesite. Inside, the main level opens into a spacious great room with a dedicated dining area, while the kitchen is positioned just off the main living space, offering connection with the ability to maintain a sense of separation when desired.

The layout features a split design, with the primary suite set on one side of the home, complete with a walk-in closet and a bath that includes a separate tub and shower, double vanity, and a private water closet. On the opposite side, two additional bedrooms share a bath, with one easily serving as a home office or flexible living space. Just off the kitchen, a utility room with exterior access adds everyday convenience and supports future additions such as a garage, carport, or outdoor living area. The optional second level, highlighted by classic dormer windows, can be finished out by your builder to include additional bedrooms and a shared bath as shown, or designed as a larger flexible space such as a bonus room, playroom, office, or additional storage. It can also be completed at a later time as your needs evolve, allowing the home to grow while maintaining its original character.

AT A *Glance*

1,506	SQUARE FEET
3	BEDROOMS
2	BATHROOMS
-	GARAGE
2	STORIES



For more information on this or any of our high-quality modular homes, learn more at [affinitymodular.com](https://affinitymodular.com)

\*Rendering shown for graphic purposes, actual elevations may vary.  
All plans, pricing, items and features subject to change without notice.

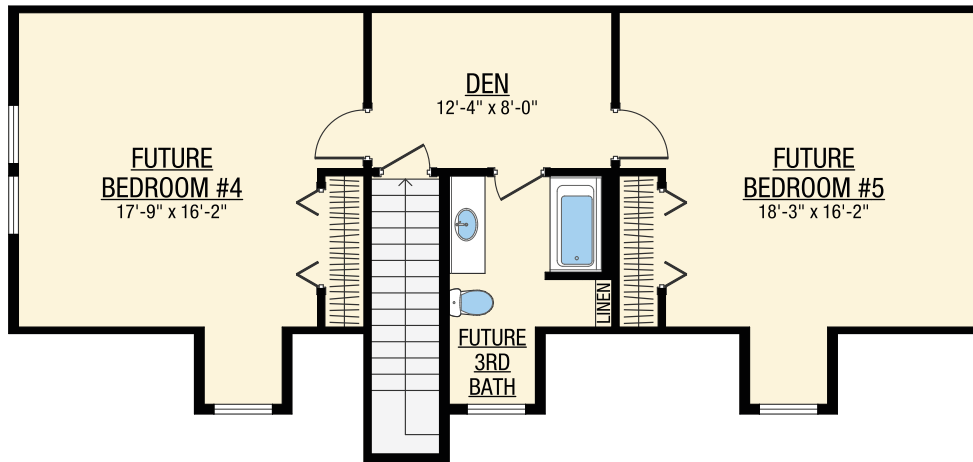


# ST. MARY'S

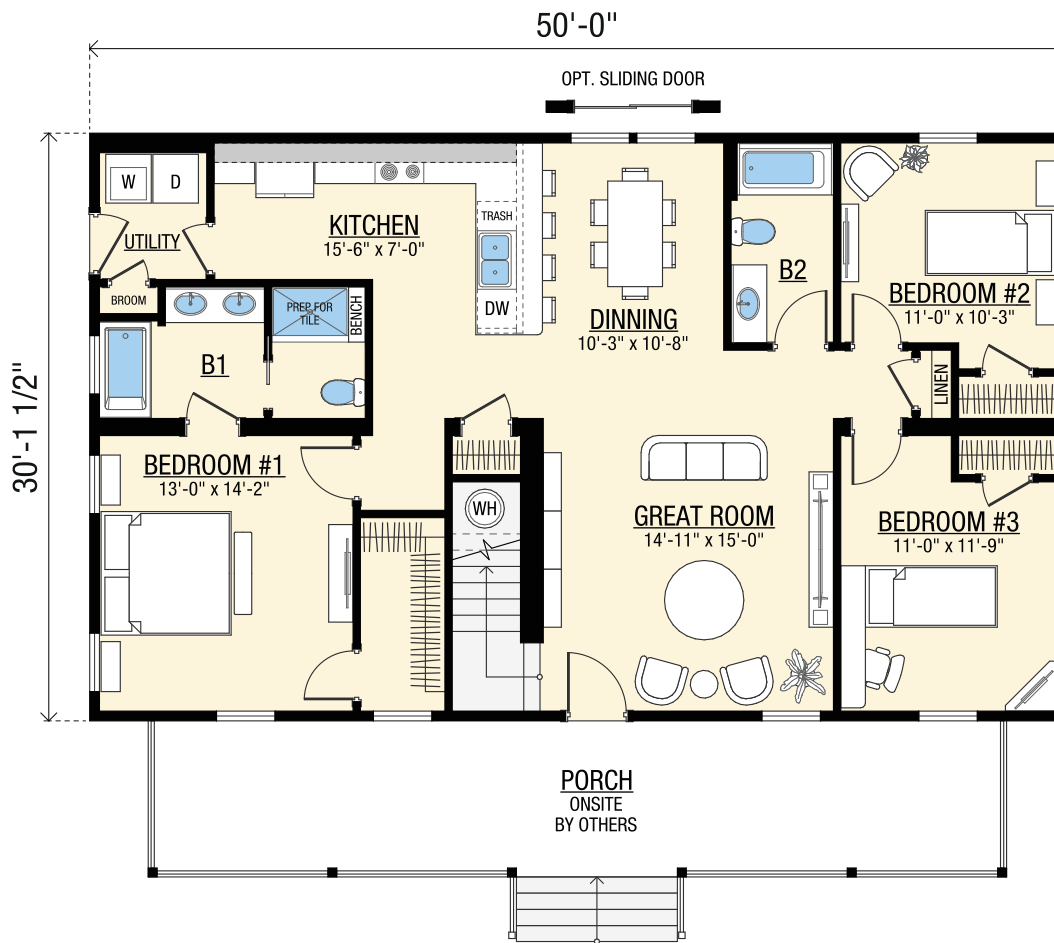
1506 Sq. Ft Heated/Cooled (1st level)  
939 Sq. Ft Heated/Cooled (2nd level)



**AFFINITY**  
MODULAR



Second Floor Plan



First Floor Plan