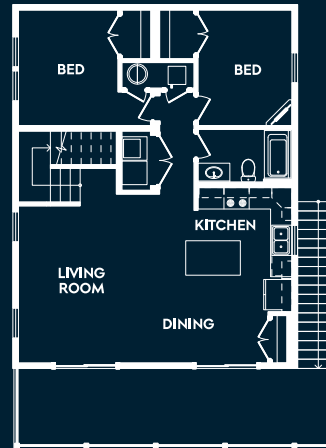
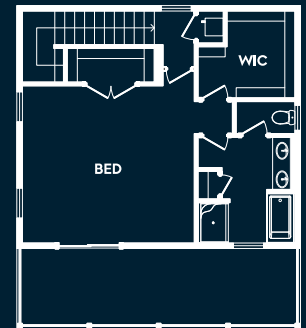




# AFFINITY



FIRST FLOOR



SECOND FLOOR

## KINGFISHER

*Layered living across two thoughtfully connected levels*

The Kingfisher offers a layered approach to living with thoughtfully connected spaces across two levels. The main level is designed for everyday entertaining and comfort, with open living, dining, and kitchen areas that extend easily to outdoor spaces, along with secondary bedrooms that provide room for guests, a home office, or flexible everyday use.

Upstairs, the entire level is dedicated to the primary suite, creating a private retreat with its own covered porch and a greater sense of separation. The suite is designed with both comfort and function in mind, featuring a spacious walk-in closet, additional storage closet, and a well-appointed bath with a separate tub and shower, a private water closet, and another linen closet. The result is a space that feels both elevated and easy to live in over time.

You can tour a model of this home in person at our facility in Lakeland, Georgia.

AT A *Glance*

1,690	SQUARE FEET
3	BEDROOMS
2	BATHROOMS
-	GARAGE
2	STORIES



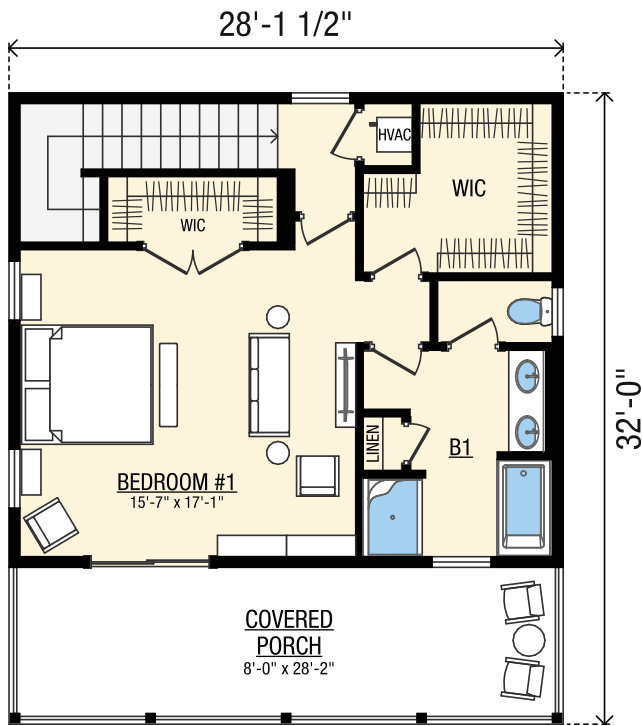
For more information on this or any of our high-quality modular homes, learn more at [affinitymodular.com](http://affinitymodular.com)

\*Rendering shown for graphic purposes, actual elevations may vary. All plans, pricing, items and features subject to change without notice.

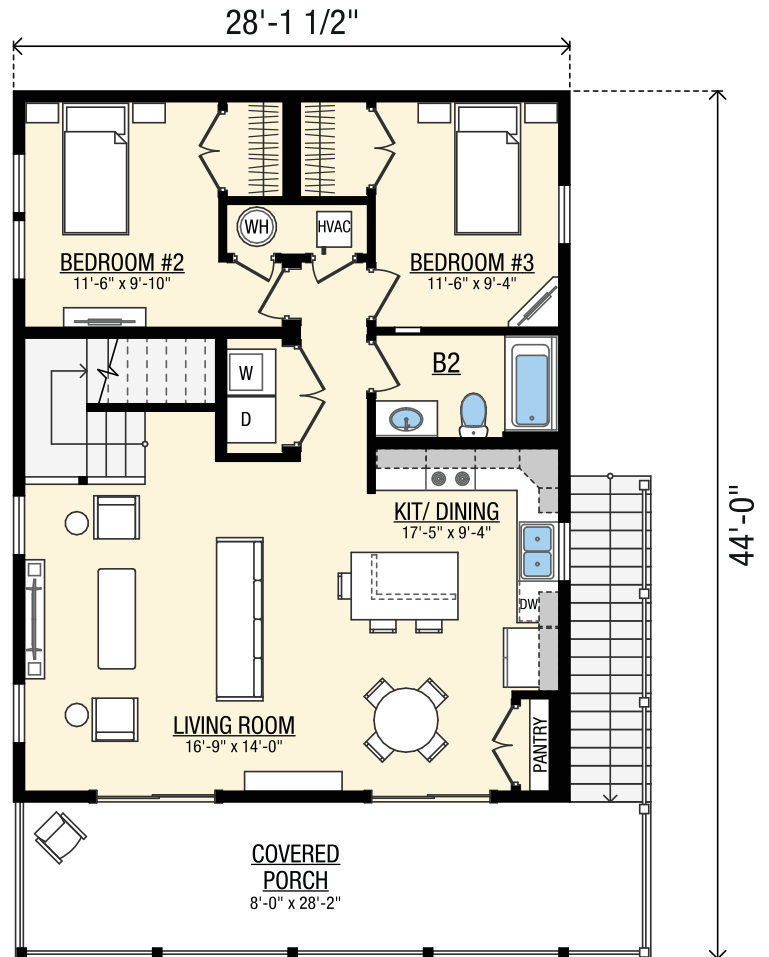


# KINGFISHER

1690 Sq. Ft Heated/Cooled  
2142 Sq. Ft Under Roof



Second Floor Plan



First Floor Plan