

AFFINITY

A VANTEM Company



Fish Hawke

The Fish Hawke is a cute little home that is perfect for a narrow lot. Whether on pilings or a crawl space, the home has a charming set up with open living in the front and a family friendly front porch. The Washer/Dryer area is located conveniently in the hall close to all the bedrooms. With 3 bedrooms and 2 baths, the 1,088 SF has plenty of room for a retired couple, or a small family, just starting out.

The square footage and other dimensions on our floor plans are approximate. Renderings are not intended to be an accurate representation of the home and are often shown with optional features and/or third-party additions that can be added at additional cost if available in your region or situation.



229-482-1200

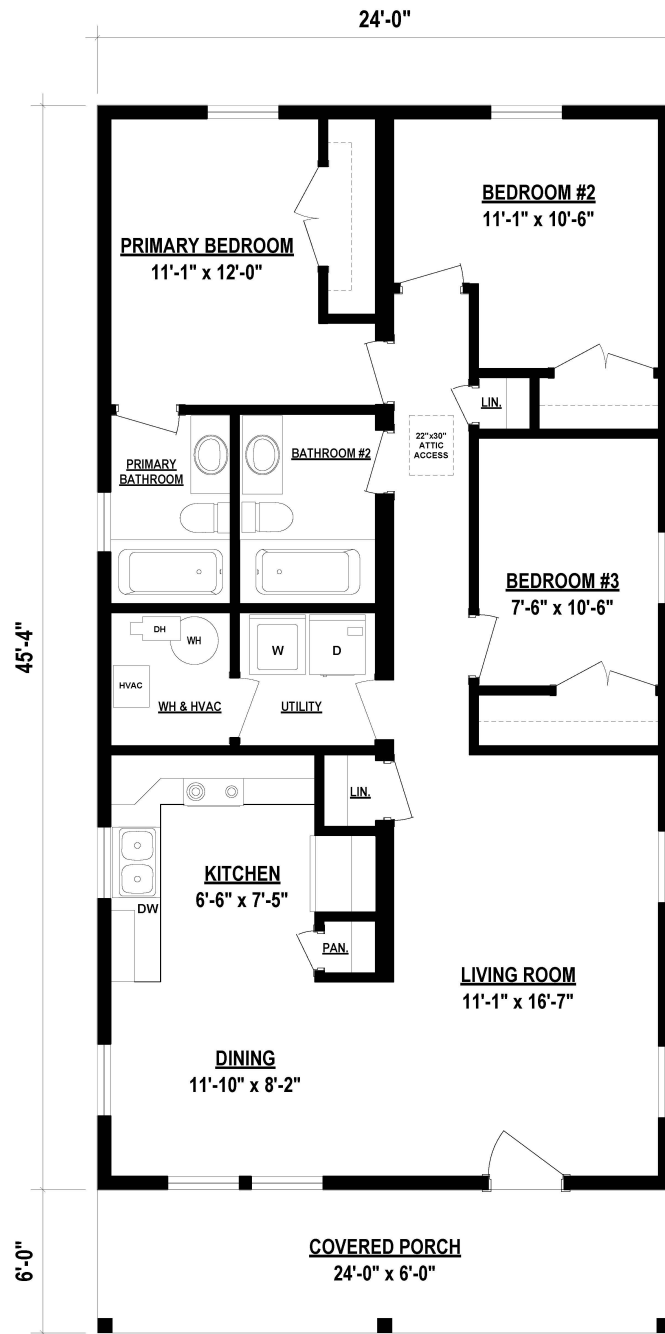
[AFFINITYMODULAR.COM](https://affinitymodular.com)



62 MURRAY BLVD LAKELAND, GA 31635

AFFINITY

A VANTEM Company



FISH HAWKE

1088 Sq. Ft Heated/Cooled
1232 Sq. Ft Under Roof

Fish Hawke Specifications:

3 Bedroom / 2 Bathroom
1088 Sq. Ft. Heated/Cooled
1232 Sq. Ft. Under Roof

AFFINITY

A VANTEM Company



Coffee Bluff

Part of our Cape collection, the Coffee Bluff is a great mid-size choice that provides a cozy 1,679 square feet of space. This 2 story home features 3 bedrooms and 2 1/2 baths. Whether it is placed on a crawl space, pilings, or a basement, this home is sure to turn heads.

The square footage and other dimensions on our floor plans are approximate. Renderings are not intended to be an accurate representation of the home and are often shown with optional features and/or third-party additions that can be added at additional cost if available in your region or situation.



229-482-1200

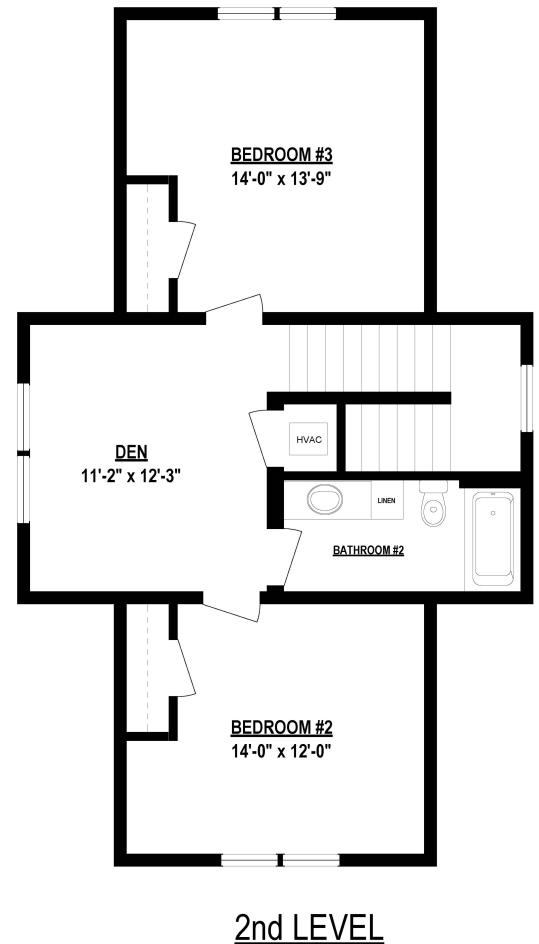
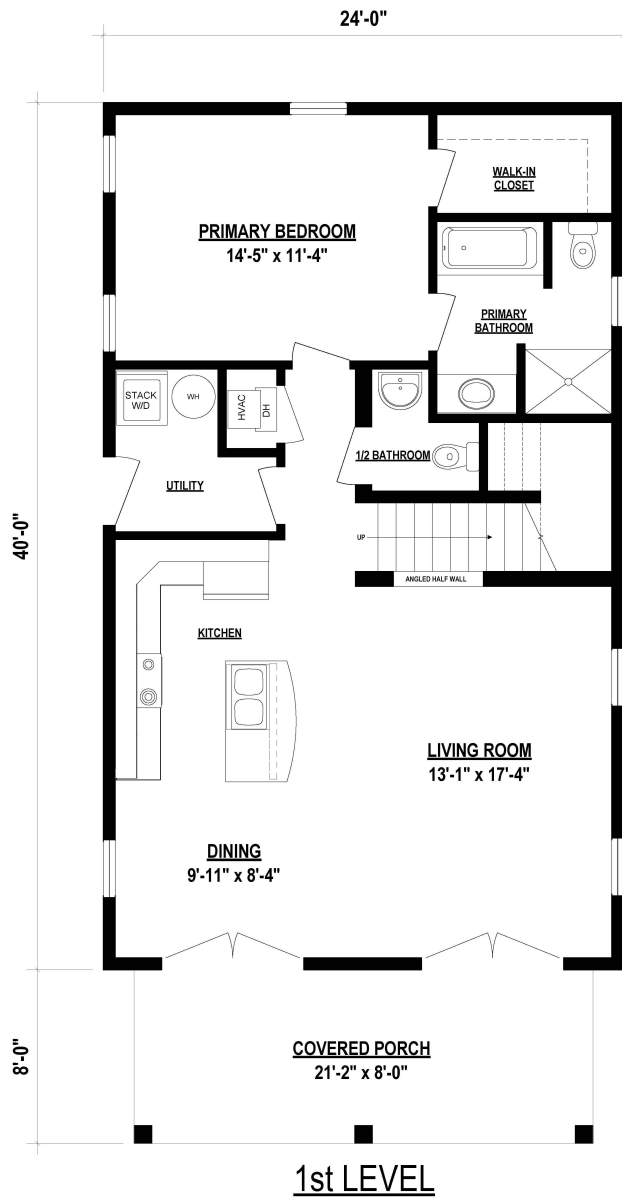
[AFFINITYMODULAR.COM](https://affinitymodular.com)



62 MURRAY BLVD LAKELAND, GA 31635

AFFINITY

A VANTEM Company



COFFEE BLUFF

1679 Sq. Ft Heated/Cooled
1845 Sq. Ft Under Roof



229-482-1200

AFFINITYMODULAR.COM



62 MURRAY BLVD LAKELAND, GA 31635

Coffee Bluff Specifications:

3 Bedroom / 2.5 Bathroom
1679 Sq. Ft. Heated/Cooled
1845 Sq. Ft. Under Roof

AFFINITY

A VANTEM Company



Battery Point

The Battery Point floor plan provides 1,824 square feet of heated/cooled space, with a total of 2,104 square feet of under roof space.

The square footage and other dimensions on our floor plans are approximate. Renderings are not intended to be an accurate representation of the home and are often shown with optional features and/or third-party additions that can be added at additional cost if available in your region or situation.

AFFINITY

A VANTEM Company



BATTERY POINT

1824 Sq. Ft Heated/Cooled
2104 Sq. Ft Under Roof



229-482-1200

AFFINITYMODULAR.COM



62 MURRAY BLVD LAKELAND, GA 31635

Battery Point Specifications:

4 Bedroom / 3.5 Bathroom
1824 Sq. Ft. Heated/Cooled
2104 Sq. Ft. Under Roof

AFFINITY

A VANTEM Company



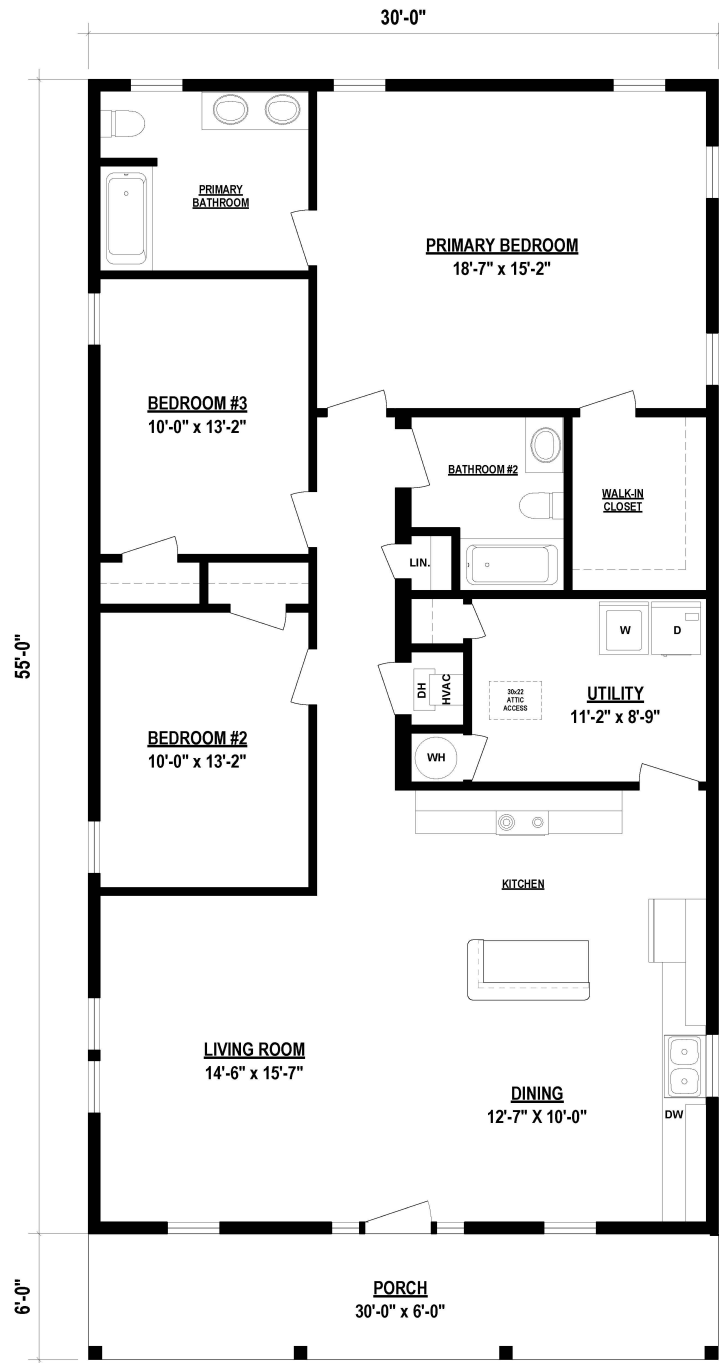
Acadian Craftsman

The most common characteristic of a Craftsman style house includes a covered front porch. Affinity's Acadian Craftsman has that and more. Open and spacious, this single-story home would fit in an older established neighborhood or as a standalone home on a private street. The home is a large 1650 SF with 3 bedrooms and 2 baths. The large utility room includes a storage closet and room for a freezer. The bedroom sizes are very large especially the master bedroom with a great walk in closet. Your builder can add a garage or carport on the side for easy entrance directly into the kitchen.

The square footage and other dimensions on our floor plans are approximate. Renderings are not intended to be an accurate representation of the home and are often shown with optional features and/or third-party additions that can be added at additional cost if available in your region or situation.

AFFINITY

A VANTEM Company



ACADIAN CRAFTSMAN

1650 Sq. Ft Heated/Cooled
1825 Sq. Ft Under Roof

Acadian Craftsman Specifications:

3 Bedroom / 2 Bathroom
1650 Sq. Ft. Heated/Cooled
1825 Sq. Ft. Under Roof

AFFINITY

A VANTEM Company



Kingfisher

With the double porches on the end and the front porch added by your builder, this floorplan is perfect for leisure and entertaining. The Kingfisher floor plan provides 1,680 square feet of heated/cooled space, with a total of 2,128 square feet of under roof space. You can see a model of this home in person at our facility in Lakeland, Georgia.

The square footage and other dimensions on our floor plans are approximate. Renderings are not intended to be an accurate representation of the home and are often shown with optional features and/or third-party additions that can be added at additional cost if available in your region or situation.

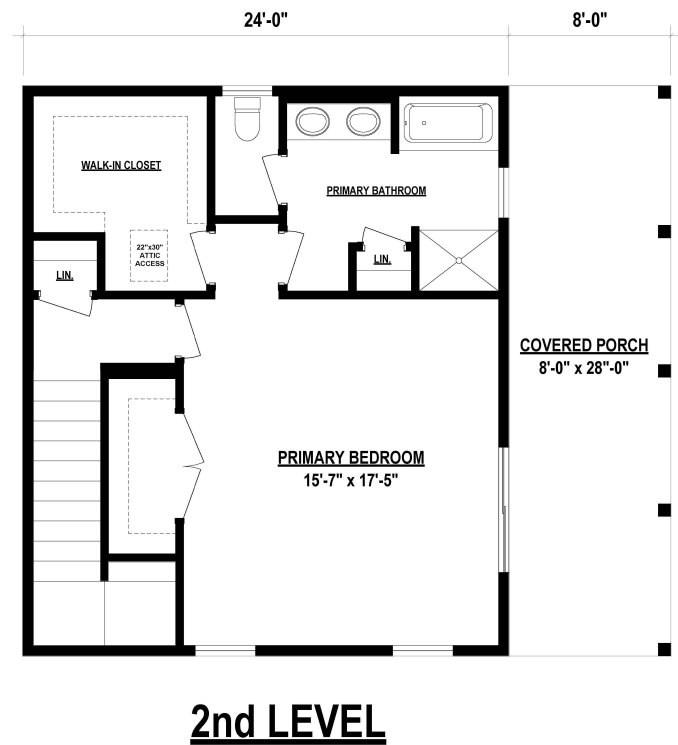
AFFINITY

A VANTEM Company



KINGFISHER

1680 Sq. Ft Heated/Cooled
2128 Sq. Ft Under Roof



Kingfisher Specifications:

3 Bedroom / 2 Bathroom
1680 Sq. Ft. Heated/Cooled
212: Sq. Ft. Under Roof

AFFINITY

A VANTEM Company



Paradise Pointe

The Paradise Pointe is a smart design, perfect for a large family or a vacation rental. Entering the home through a large front porch into the foyer you'll find a 1/2 bath and the washer and dryer units. The ample size hall leads to an open living/dining/kitchen area at the rear of the home. The kitchen has a large walk-in pantry and a long bar top perfect for informal dining or entertaining. Although the home has 4 bedrooms, one of the secondary bedrooms has a private bath, and with an optional exterior entry door, it can be easily converted to a rental lock-out room. Each room at the back of the home opens onto the rear porch that spans across the entire back of the home. The master bedroom suite has access to the porch and includes a luxury master bath. Enjoy the garden tub and large walk-in shower as well as an oversized walk-in closet. This home has large room sizes and plenty of closet space for a growing family.

The square footage and other dimensions on our floor plans are approximate. Renderings are not intended to be an accurate representation of the home and are often shown with optional features and/or third-party additions that can be added at additional cost if available in your region or situation.

AFFINITY

A VANTEM Company



PARADISE POINTE

2250 Sq. Ft Heated/Cooled
2588 Sq. Ft Under Roof



229-482-1200

AFFINITYMODULAR.COM



62 MURRAY BLVD LAKELAND, GA 31635

Paradise Pointe Specifications:

4 Bedroom / 3.5 Bathroom
2250 Sq. Ft. Heated/Cooled
2588 Sq. Ft. Under Roof

AFFINITY

A VANTUM Company



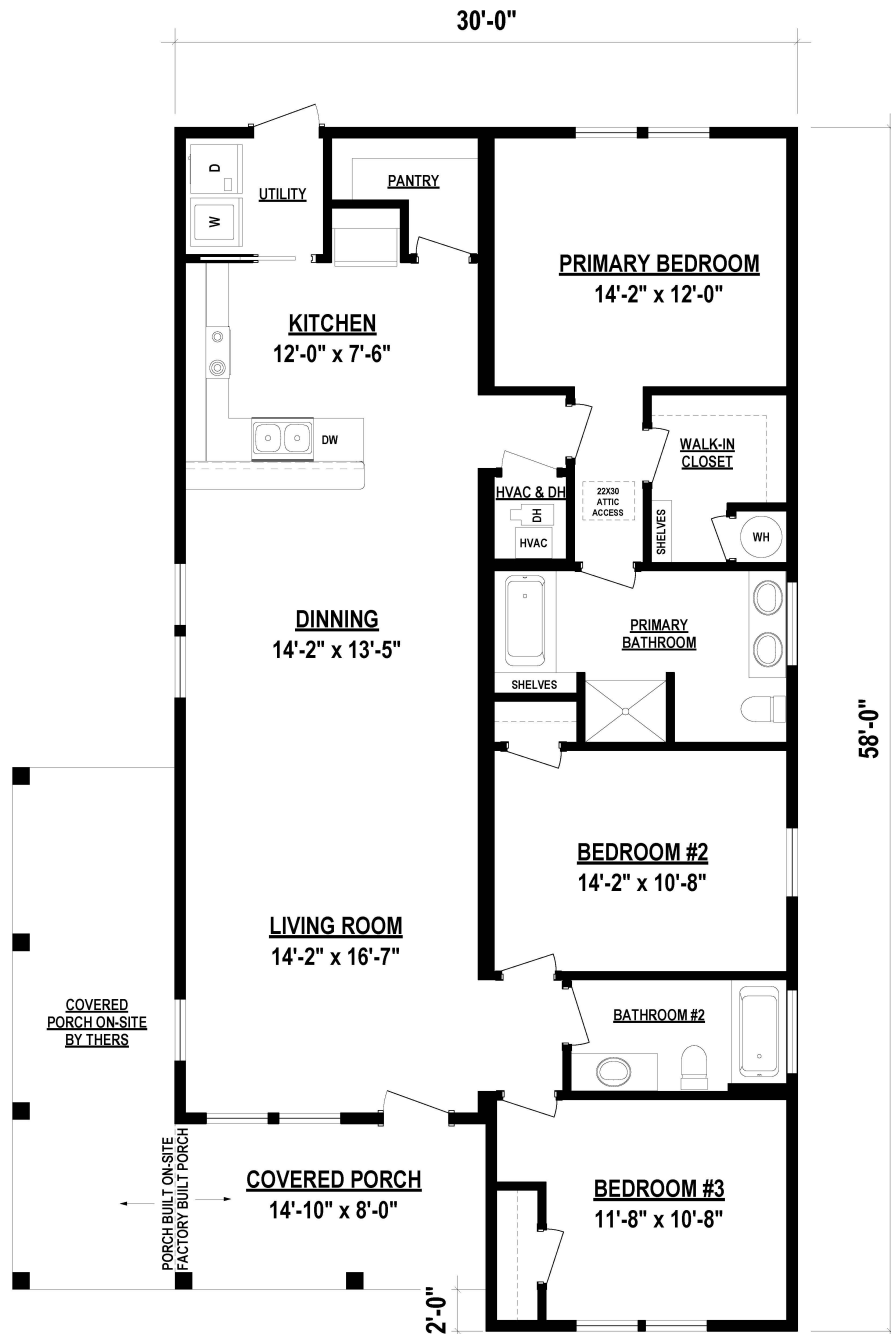
Sapelo

The Sapelo floor plan provides 1,591 square feet of heated/cooled space, with a total of 1,708 square feet of under roof space.

The square footage and other dimensions on our floor plans are approximate. Renderings are not intended to be an accurate representation of the home and are often shown with optional features and/or third-party additions that can be added at additional cost if available in your region or situation.

AFFINITY

A VANTEM Company



SAPELO

1591 Sq. Ft Heated/Cooled
1708 Sq. Ft Under Roof

Sapelo

Specifications:

3 Bedroom / 2 Bathroom
1591 Sq. Ft. Heated/Cooled
1708 Sq. Ft. Under Roof

AFFINITY

A VANTEM Company



Whitney Lake

The Whitney Lake floor plan provides 1,274 square feet of heated/cooled space, with a total of 1,478 square feet of under roof space.

The square footage and other dimensions on our floor plans are approximate. Renderings are not intended to be an accurate representation of the home and are often shown with optional features and/or third-party additions that can be added at additional cost if available in your region or situation.



1274 Sq. Ft Heated/Cooled
1478 Sq. Ft Under Roof

Whitney Lake Specifications:

3 Bedroom / 2 Bathroom
1274 Sq. Ft. Heated/Cooled
1478 Sq. Ft. Under Roof

AFFINITY

A VANTEM Company



Walkers Way

The Walkers Way floor plan provides 1,800 square feet of heated/cooled space, with a total of 1,800 square feet of under roof space.

The square footage and other dimensions on our floor plans are approximate. Renderings are not intended to be an accurate representation of the home and are often shown with optional features and/or third-party additions that can be added at additional cost if available in your region or situation.

AFFINITY

A VANTEM Company



WALKERS WAY

1800 Sq. Ft Heated/Cooled
1800 Sq. Ft Under Roof



229-482-1200

AFFINITYMODULAR.COM



62 MURRAY BLVD LAKELAND, GA 31635

Walkers Way Specifications:

3 Bedroom / 2 Bathroom
1800 Sq. Ft. Heated/Cooled
1800 Sq. Ft. Under Roof

AFFINITY

A VANTEM Company



St. Mary's

The St. Mary's is a 3 bedroom 2 bath home with 1,500 square feet of living space and unfinished space in the attic for you or your builder to finish as desired. If you choose to finish the upper area on site, this will add an additional 884 square feet of space.

The square footage and other dimensions on our floor plans are approximate. Renderings are not intended to be an accurate representation of the home and are often shown with optional features and/or third-party additions that can be added at additional cost if available in your region or situation.



229-482-1200

[AFFINITYMODULAR.COM](https://affinitymodular.com)

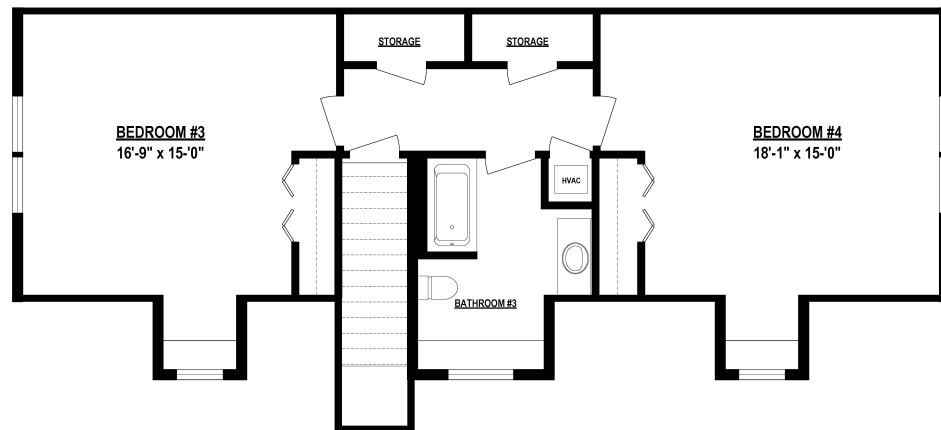


62 MURRAY BLVD LAKELAND, GA 31635

AFFINITY

A VANTEM Company

POSSIBLE 2nd LEVEL LAYOUT



1ST LEVEL

St. Mary's

1500 Sq. Ft Heated/Cooled (1st Level)
884 Sq. Ft Under Roof (2nd Level)

St. Mary's Specifications:

3 Bedroom / 2 Bathroom
1500 Sq. Ft. Heated/Cooled (1st)
884 Sq. Ft. Heated/Cooled (2nd)